

SPEAKMAN®

SE-690

Combination Shower & Eye/Face Wash

DESCRIPTION

SE-690 Safe-T-Zone® features the SE-490 eye/face wash with dual spray outlets, flip top dust covers and stainless steel bowl combined on a painted galvanized steel stanchion with an Impeller Action deluge showerhead which is activated by a high visibility yellow pull rod.

SPECIFICATIONS

SHOWER HEAD: 8" Dia. CYCOLAC® Yellow Plastic.
FLOW CONTROL: Internal 20 gpm Regulator.
VALVE: 1" NPT Female Brass, Chrome-Plated. Full Flow Stay-Open Ball Valve.
ACTIVATOR: Powder Coated Yellow, Aluminum Triangular Pull Rod.
STANCHION: 1-1/4" IPS Steel Piping with Brass Fittings.
INLET & WASTE: 1-1/4" NPT Female.
FINISH: Safety Green Paint.

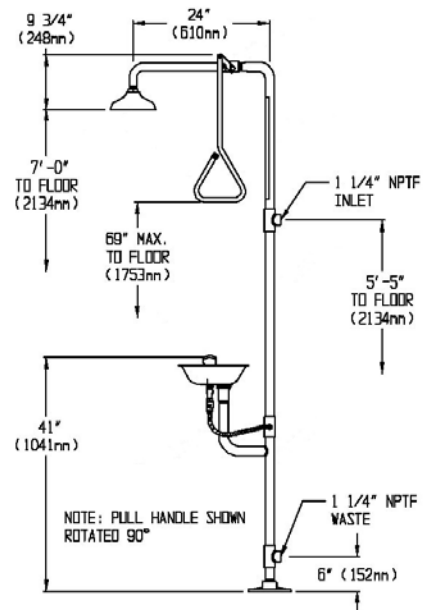
EYE/FACE WASH: SE-490

BOWL: 300 Series Stainless Steel.
SPRAY HEADS: (2) Yellow ABS Plastic Spray Outlet, Sprayface, and Dust Cover.
VALVE: 1/2" NPT Female Brass, Chrome-Plated.
ACTIVATOR: Stainless Steel Push Handle.
INLET: 1/2" NPT Female.

Universal Emergency Sign Included
Compliance: Meets ANSI Z358.1-1998

OPTIONS

- Hand Foot Operation (HFO)
- Freeze Protection Valve (FPV)
- Scald Protection Valve (SPV)
- Flow Switch (FLW)
- Hand Held Spray (HS)
- Top Supply (TS)
- Stainless Steel Shower Head (SSH)
- Stainless Steel Pull Rod (SPR)
- Stainless Steel Ball Valves (SSBV)
- Chrome Plated Brass Shower Head (BH)



Job Name _____
Location _____
Architect/Engineer _____
Sales Representative _____
Wholesaler _____
Date _____ Model # _____